



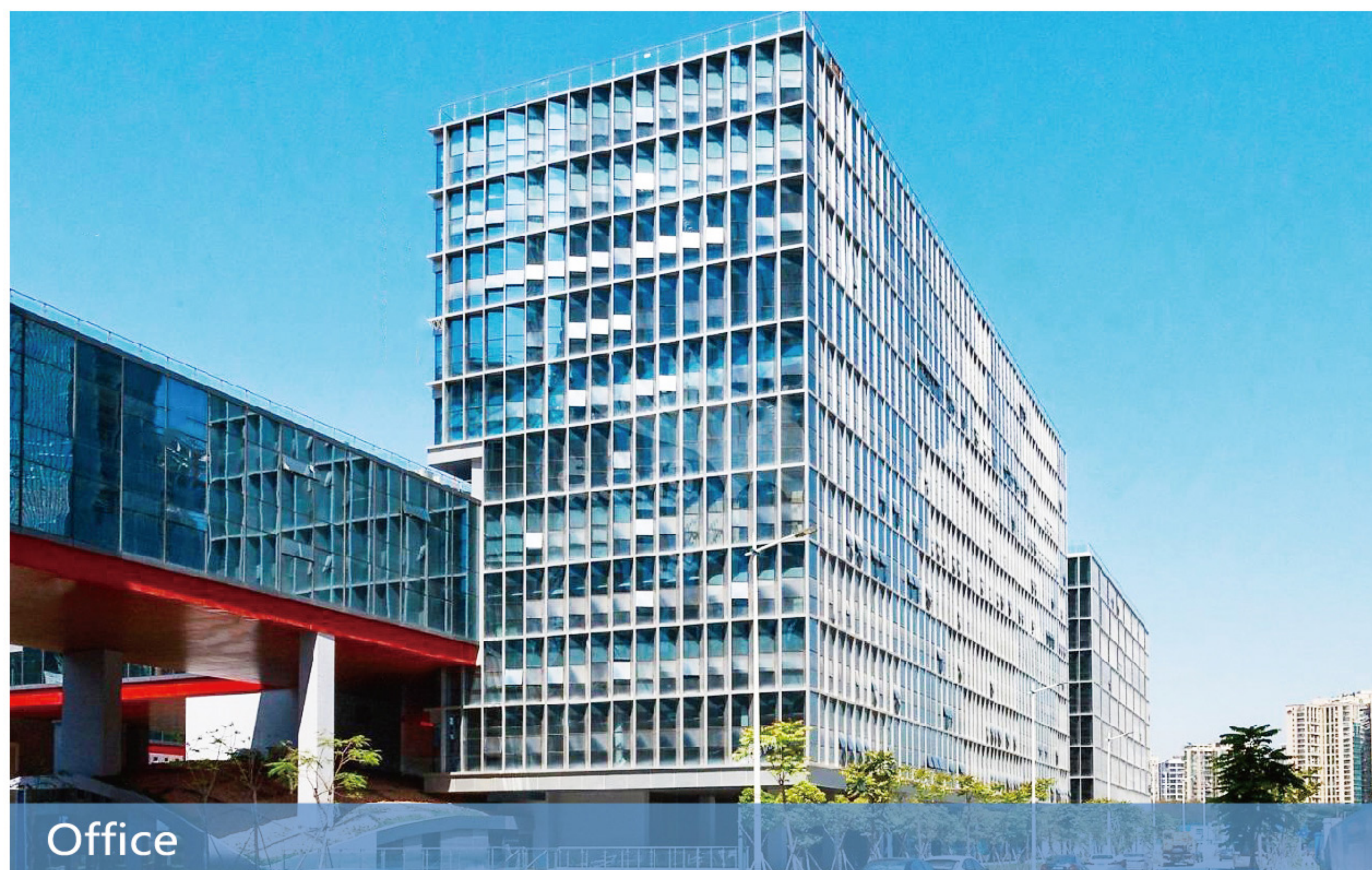
TK Series Human Machine Interface

Stable, reliable and easy-to-use HMI products and automation solutions

Version 2022.05



Factory



Office

BRAND STORY

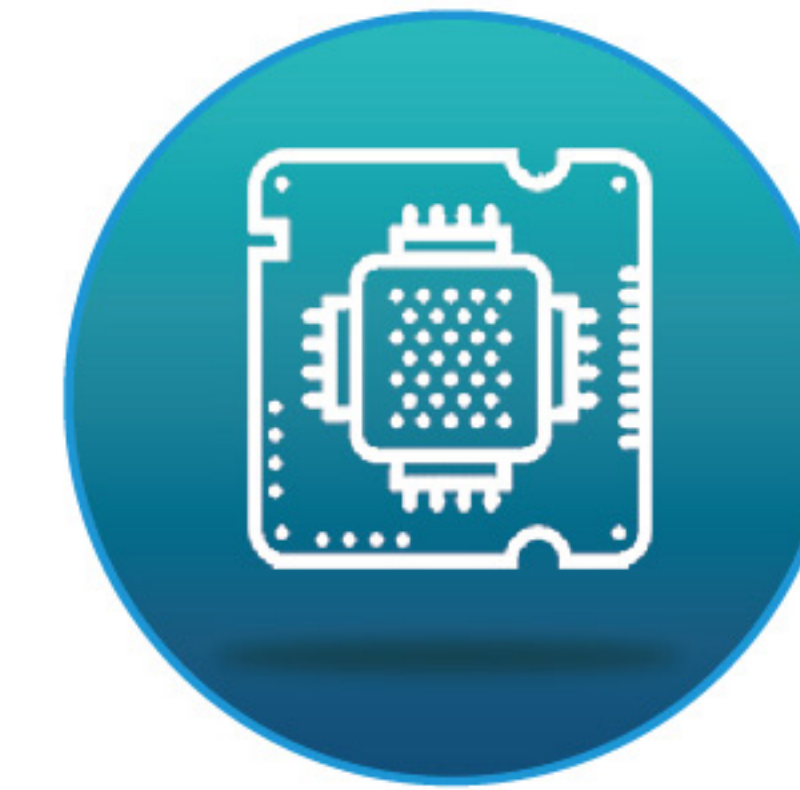
The predecessor of Coolmay Technology is Coolmay apparel, which initially started with the production of lace machines. This kind of device is low value but it is difficult for users to make after-sales budgets. In addition, they lacked professional maintenance technology, which made after-sales maintenance difficult. If any problem, they had to come to the manufacturer for help, which caused cost increasing for both parties. How great it would be if after-sales problems could be solved without door-to-door service!

Coolmay decided to develop one controller to solve this problem, and created the first HMI/PLC all-in-one in China in 2006. The all-in-one integrates the functions of PLC and HMI, including the highly integration of logic control, analog input and output, high speed counting, high speed pulse, communication, etc.. It supports arc interpolation and linear Interpolation. This device made after-sales maintenance very simple and greatly reduced the maintenance cost of the entire equipment. Users do not need to have professional technology but just simply replace the all-in-one if any problem.

Soon after entering the market, the actual effects of the product emerged. After using the all-in-one machine, the after-sales problem that a certain textile equipment manufacturer could not solve for many years was solved instantly, which reduced 90% after-sale cost.

This made Coolmay determine to engage in the all-in-one industry more firm. It is this force that drives Coolmay to embark on a new path of automation control concept.

TK series is suitable for various complex industrial application environments.



Original built-in PLC function (optional)



Support PLC program download to realize internal communication



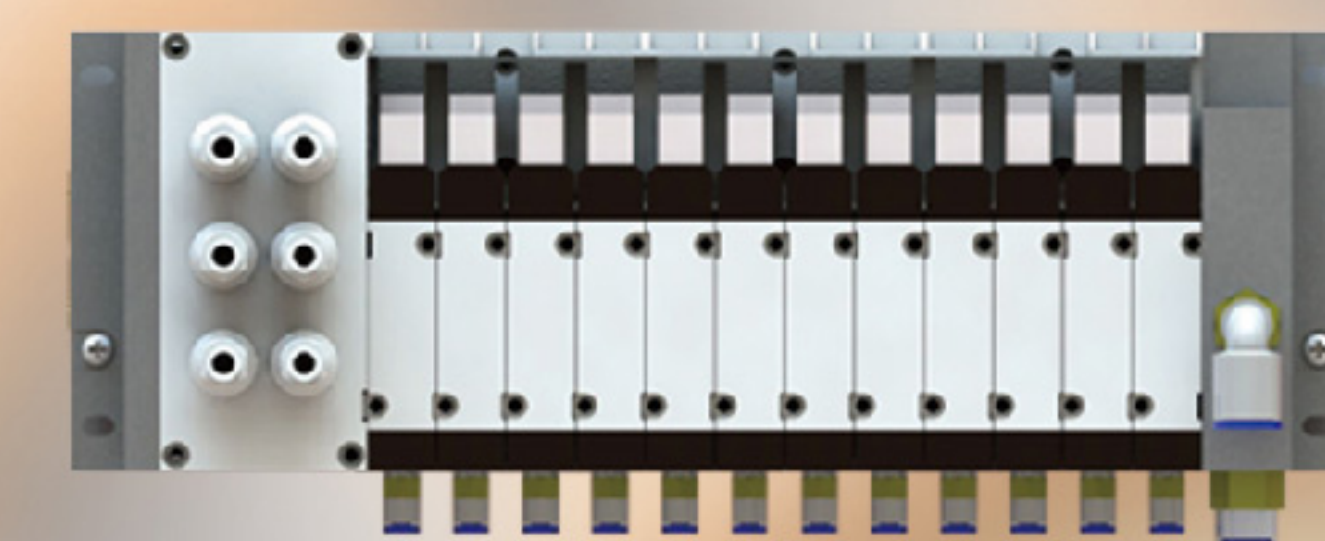
Support cloud service platform



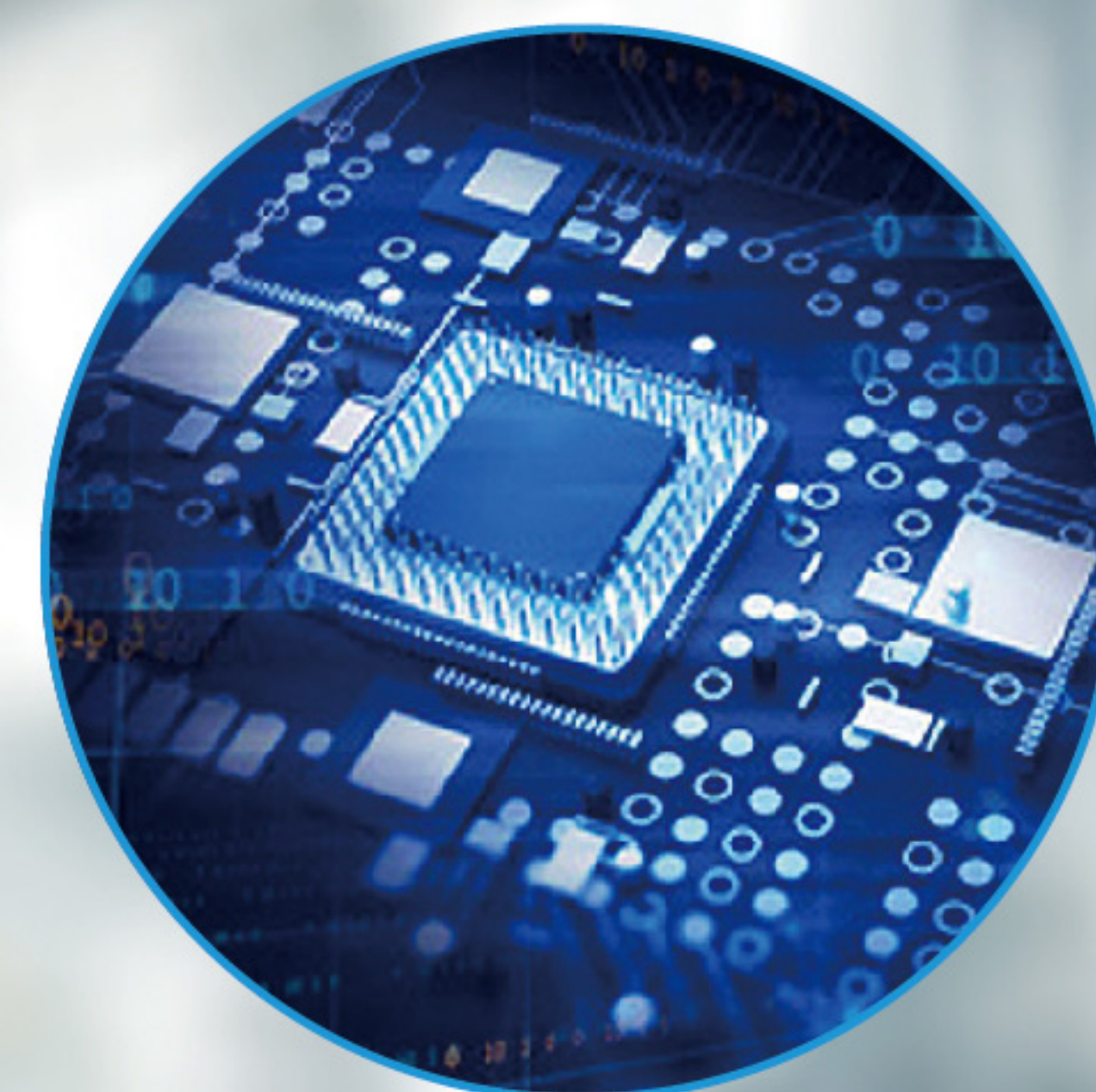
IO module



Analog module

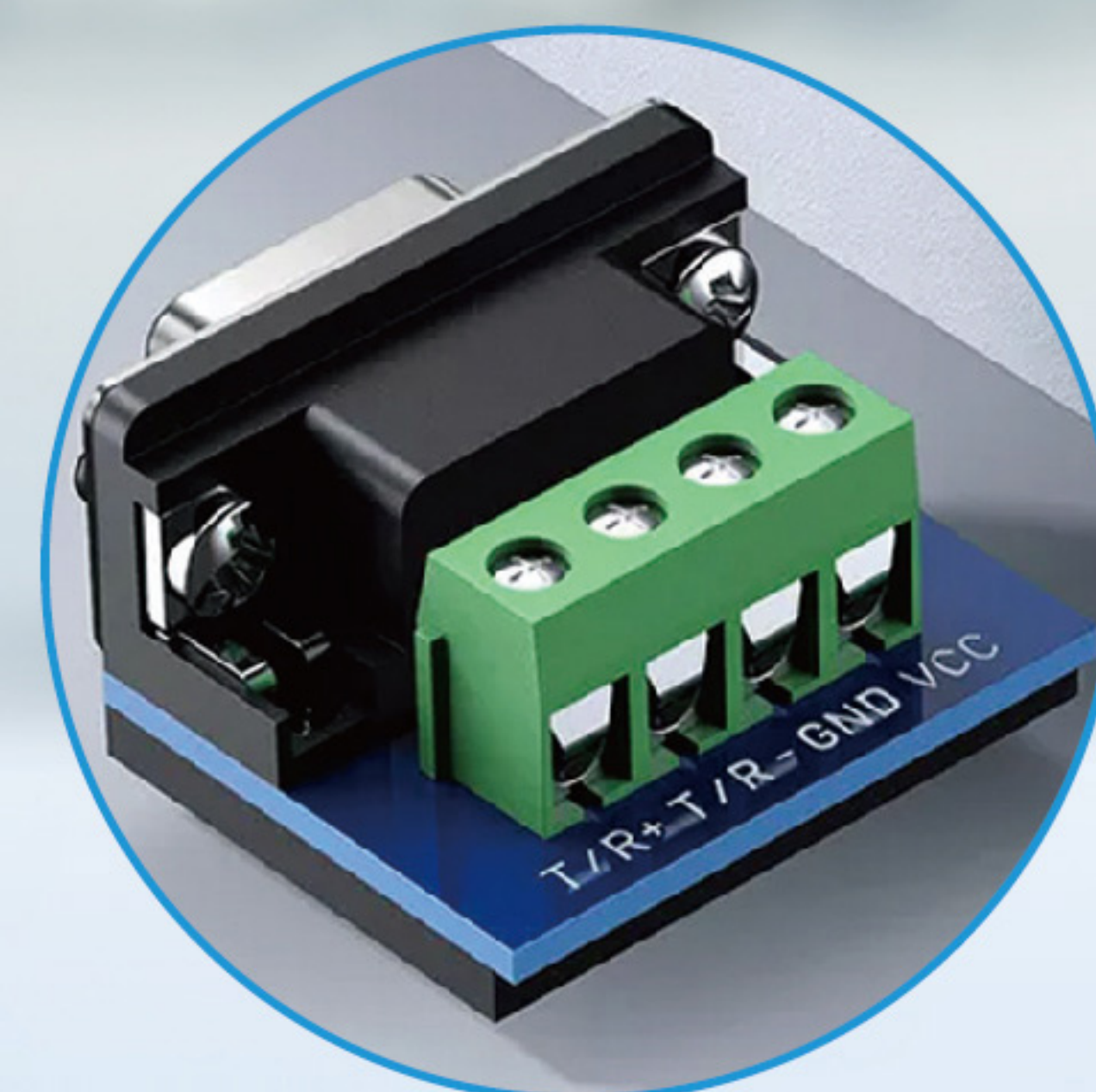


Valve terminal module



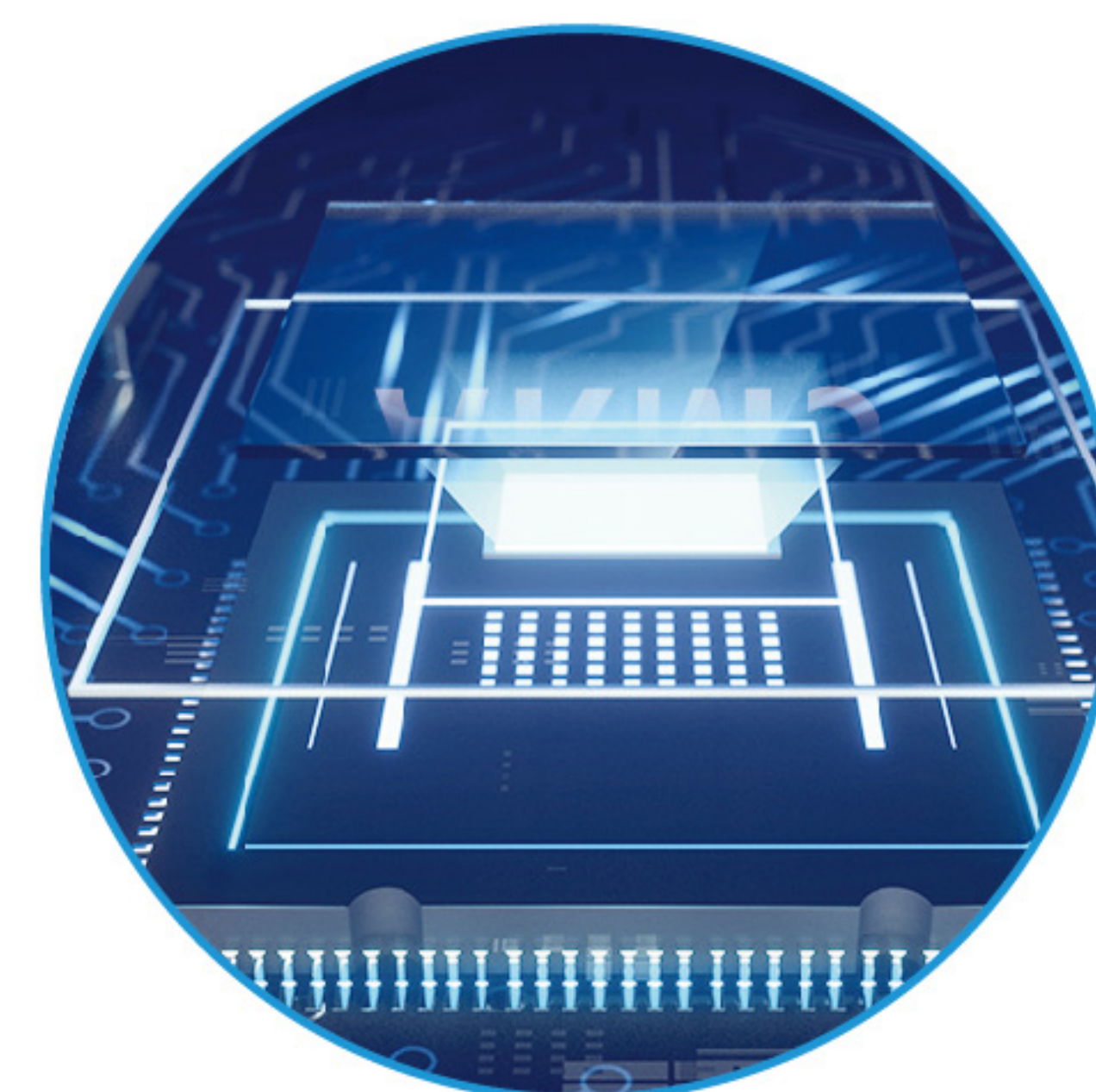
Conformal coating protection for motherboard

In various harsh industrial environments, it is more effective against shock, moisture, high and low temperature, and chemical corrosion



Integrated rich industrial interfaces

RS232, RS485, USB2.0, WIFI, Ethernet



Onboard 408MHz high performance 32Bit industrial grade CPU

Fast running speed, high data processing efficiency and strong anti-interference ability



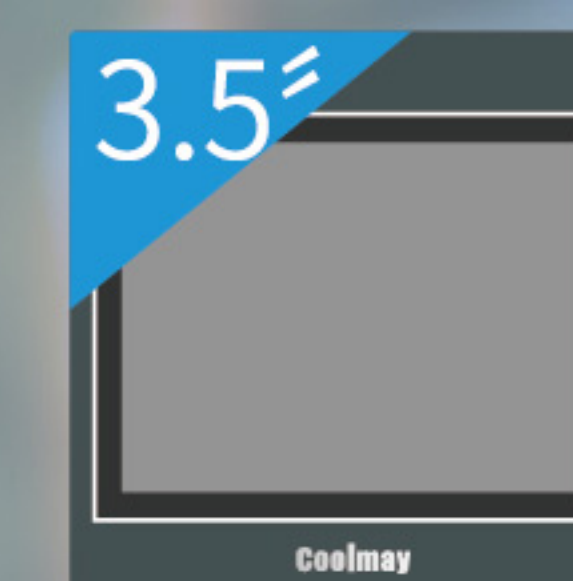
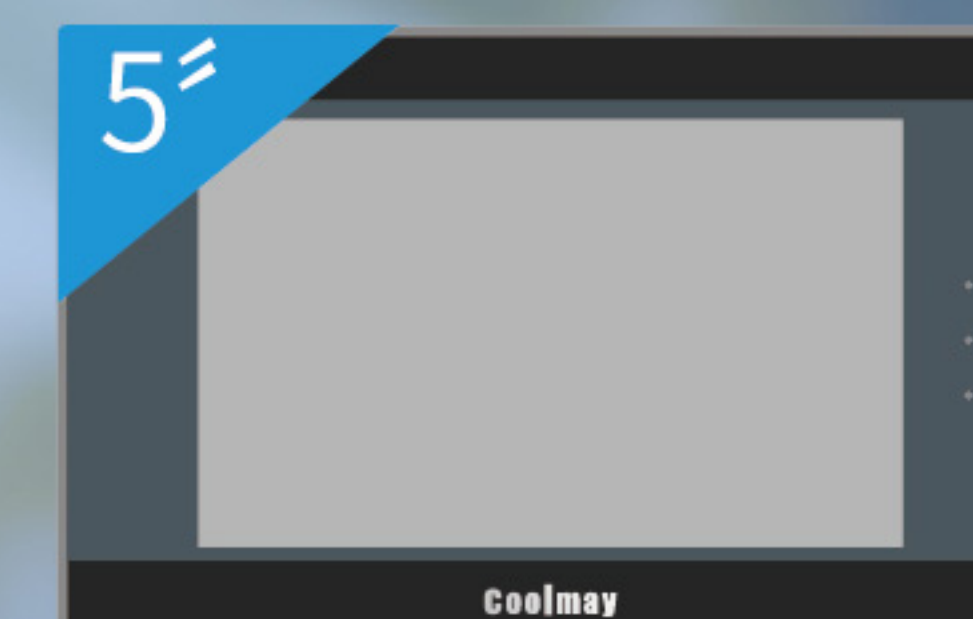
IP65 level for panel protection



CE certificate

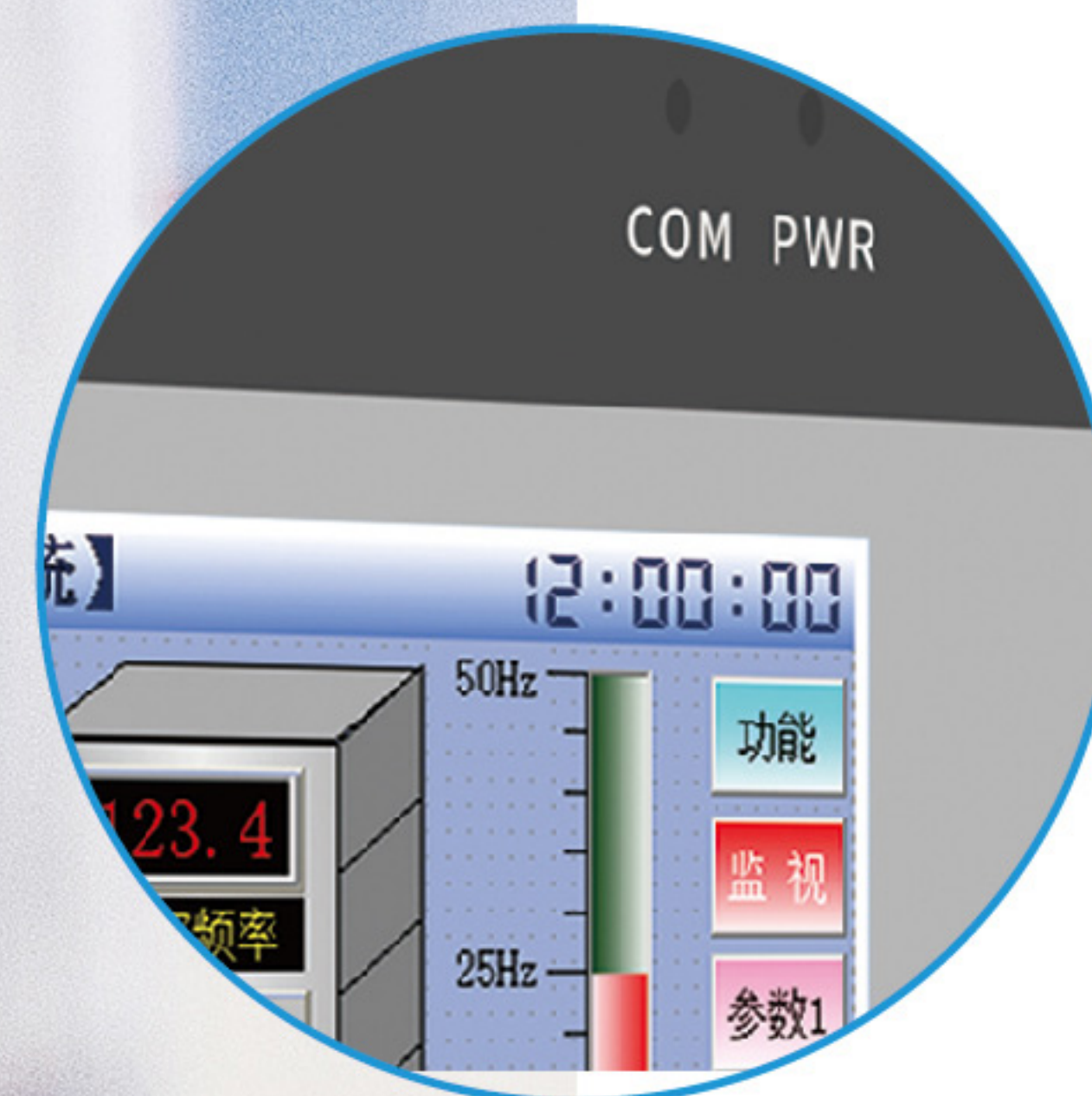


Conform to FCC Class A



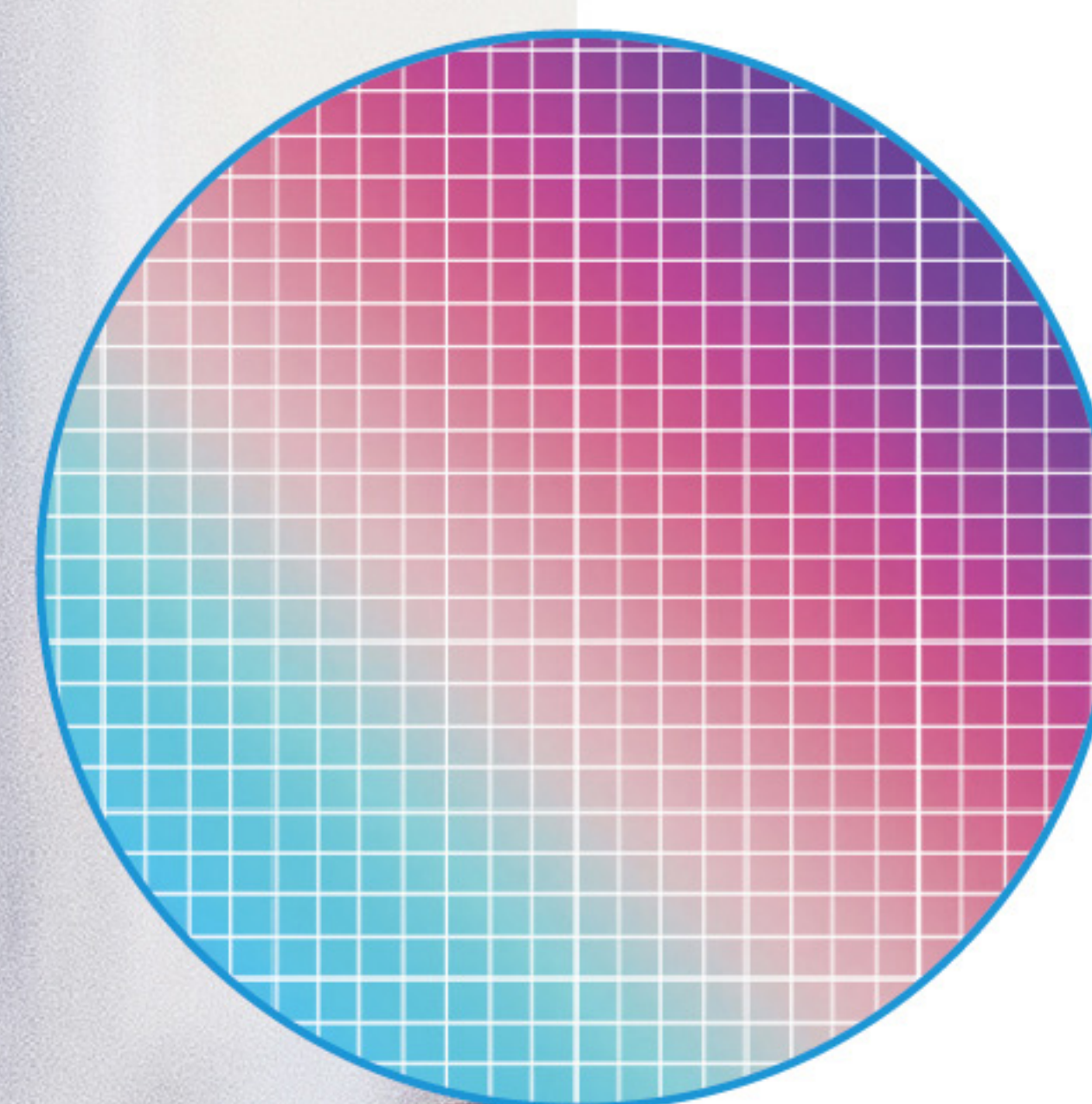
Multiple sizes available (3.5", 4.3 " , 5", 7", 10", 15")

Provide common human machine interface size in industrial control environment



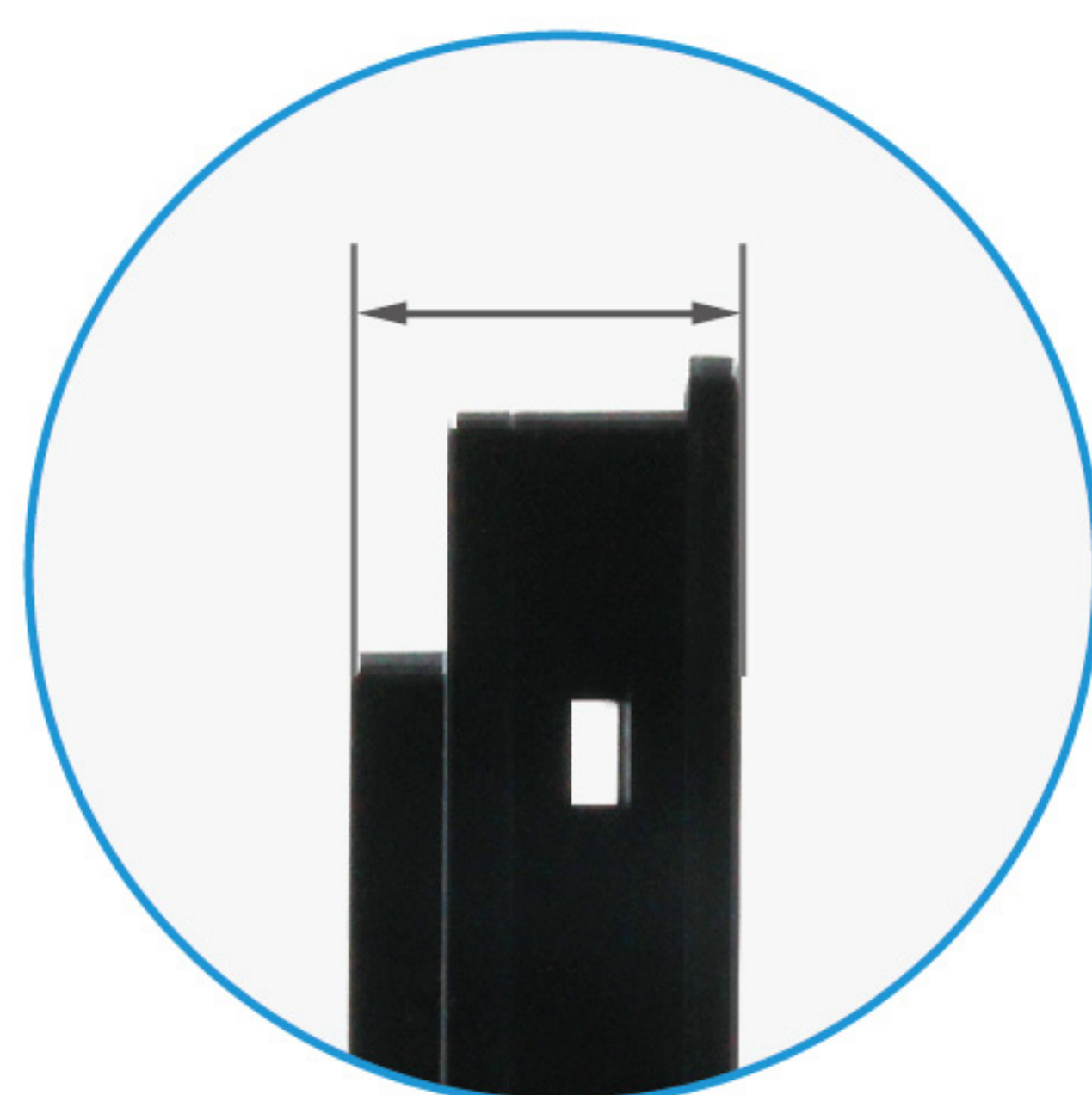
Compact design, classic color

Compact, light design with industrial classic color



65K TFT

Brand new high-brightness, high-contrast display LCD, providing colorful operation interface.



Thin and light embedded

Can be easily installed in various complex industrial application environments



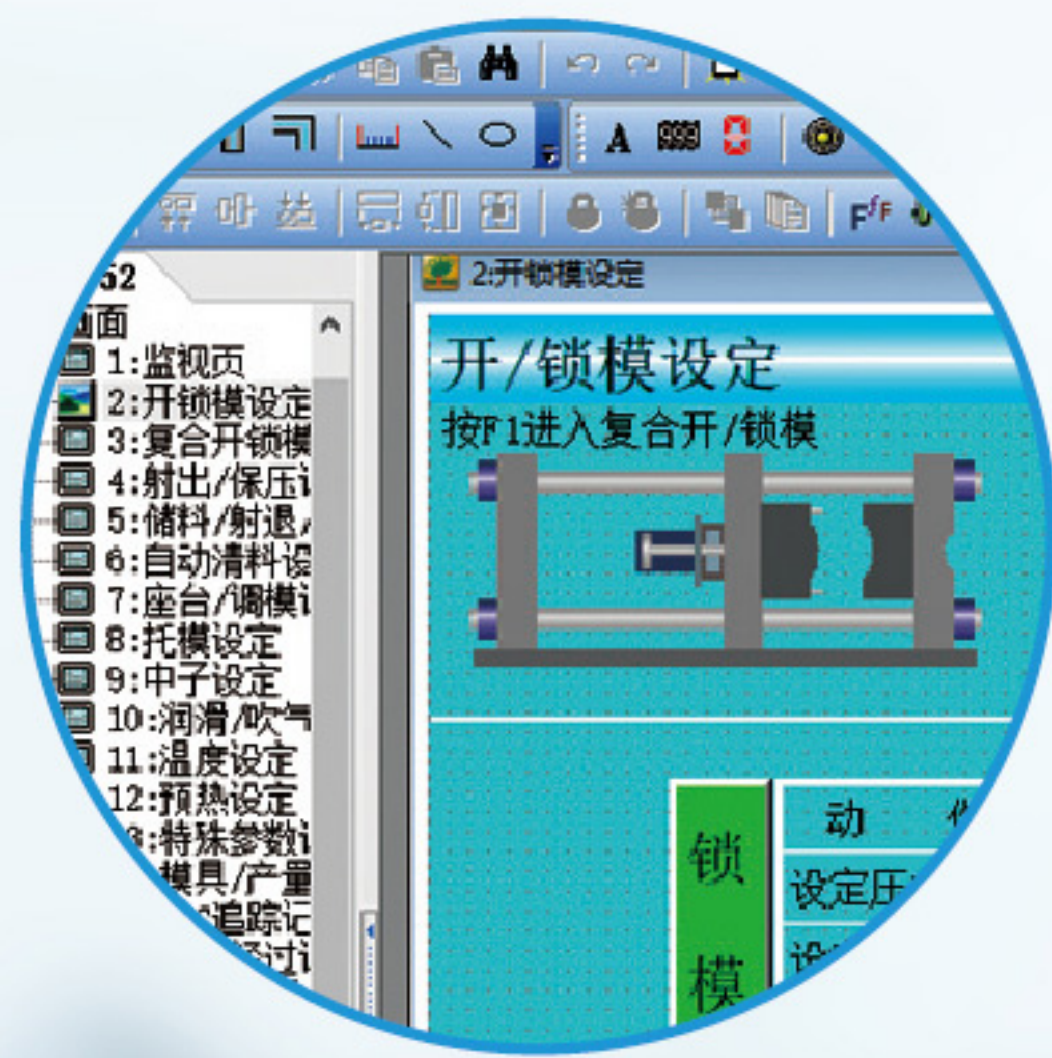
Optional WIFI

802.11 b/ g/ n wireless communication standard protocol
convenient upload/ download function of configuration software via network cable



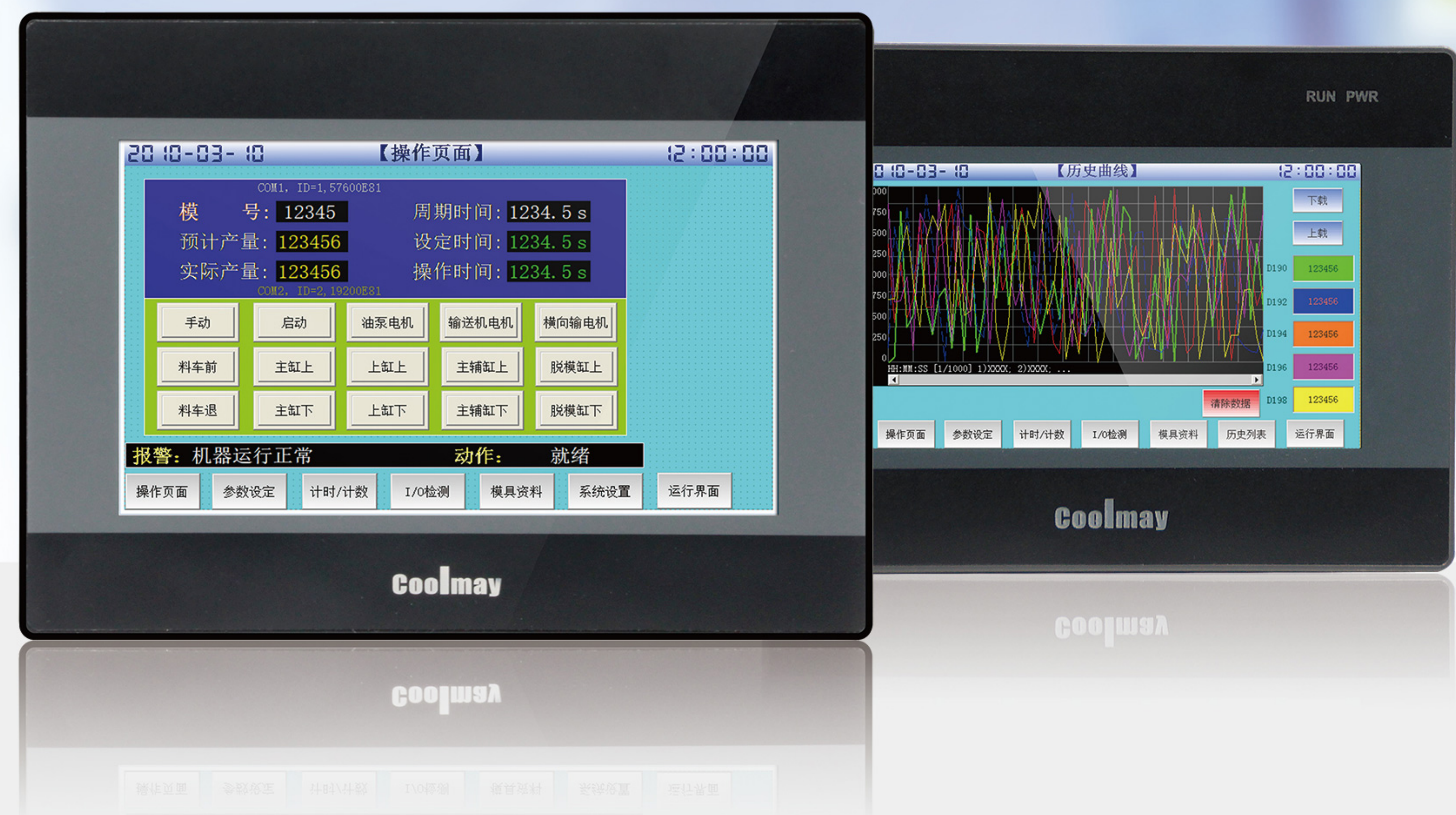
Data security upgrade

This series of HMI supports password management functions. Users can set passwords for specific registers, buttons, and screens, and add permissions to ensure data security.



Definition of label function

In this series of HMI, it has label function and can support user-defined register name



mView1.38

Simple programming, easy to use, powerful

mView1.38 is a set of stable and reliable human machine interface programming software for industrial occasions. Independent and original system design, running speed increased by 200%, memory usage reduced by 50%. The screen is intuitive and easy to grasp, and the usage is similar to commonly used file editing software. You can easily create charts, histograms, various button displays and other functions with the mouse.

It is with powerful functions, including complete industrial environment requirements, such as recipe function, data recording, historical data management, historical trend graph, alarm management, etc., as well as advanced grammar checking, gesture page changing, password management and data protection, macro instructions, HMI Program simulation...etc.

It supports multiple communication protocols and can communicate with more than 200 PLCs and controllers on the market.





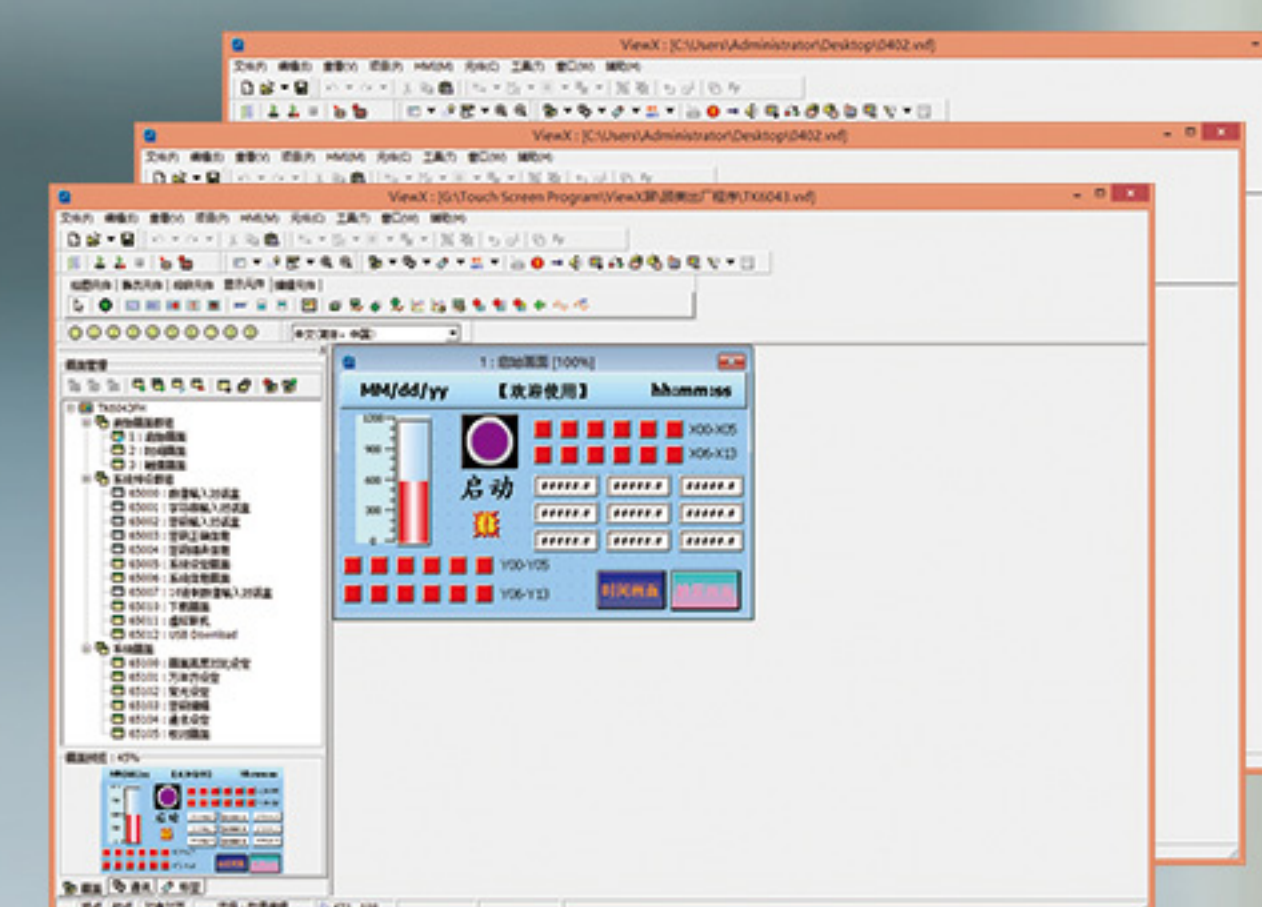
Fast running

200% increase in operating speed, 50% reduction in memory usage



Convenient communication protocol

Simultaneously support multiple communication protocols
Modbus RTU/ASCII, Freeport protocol, TCP/IP protocol



Flexible design

There are complete types of graphic elements, and programming is simple and convenient.

mView software

Rich language

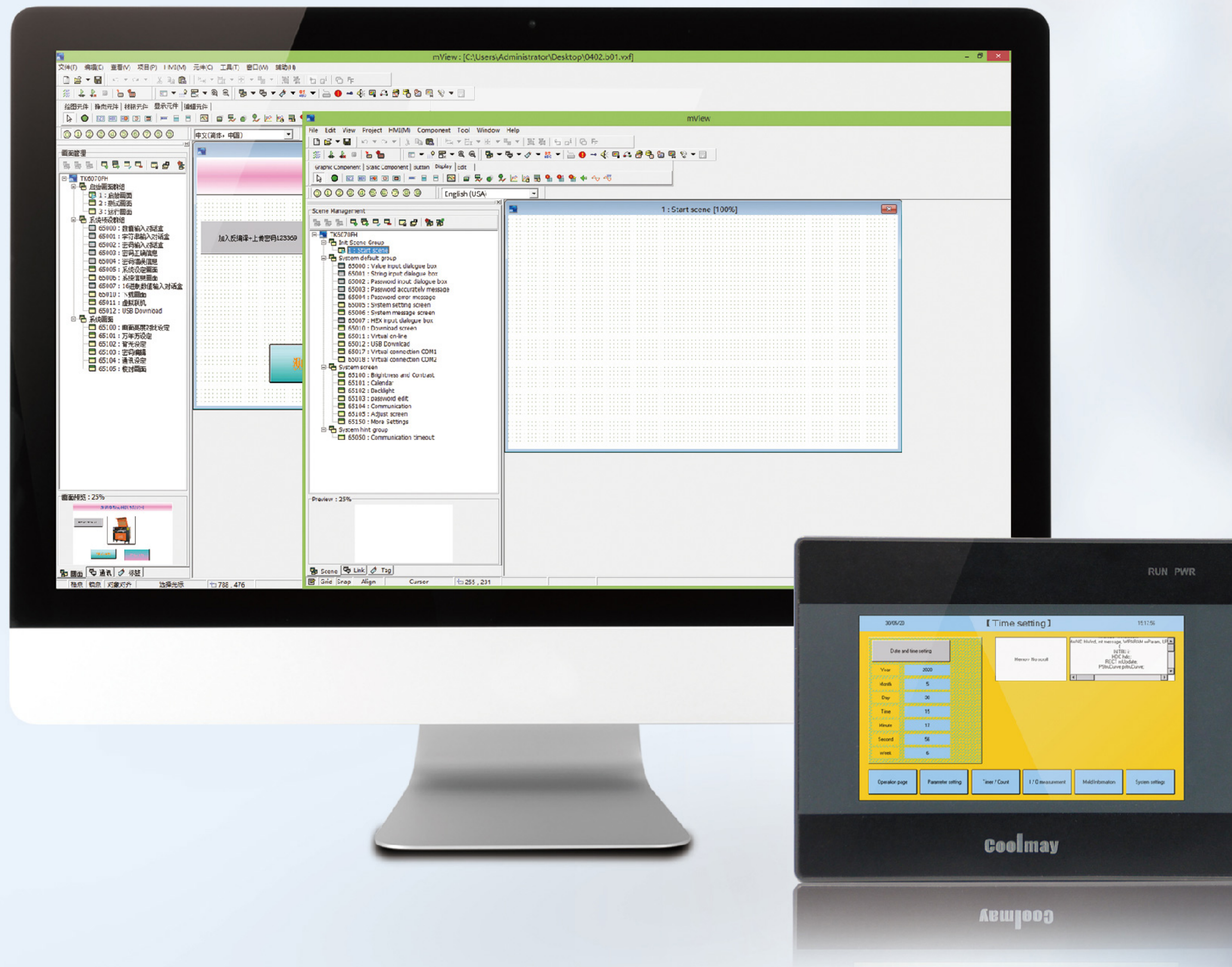
Support hundreds of languages programming and display, such as English, Spanish, Thai, etc..

Powerful functions

Engineering conversion ability
Data scheduling function

Sound output

You can set the button sound and alarm sound by yourself
Import and export sound files





485 smart connection

When slave is online again, the master and the slave are connected again



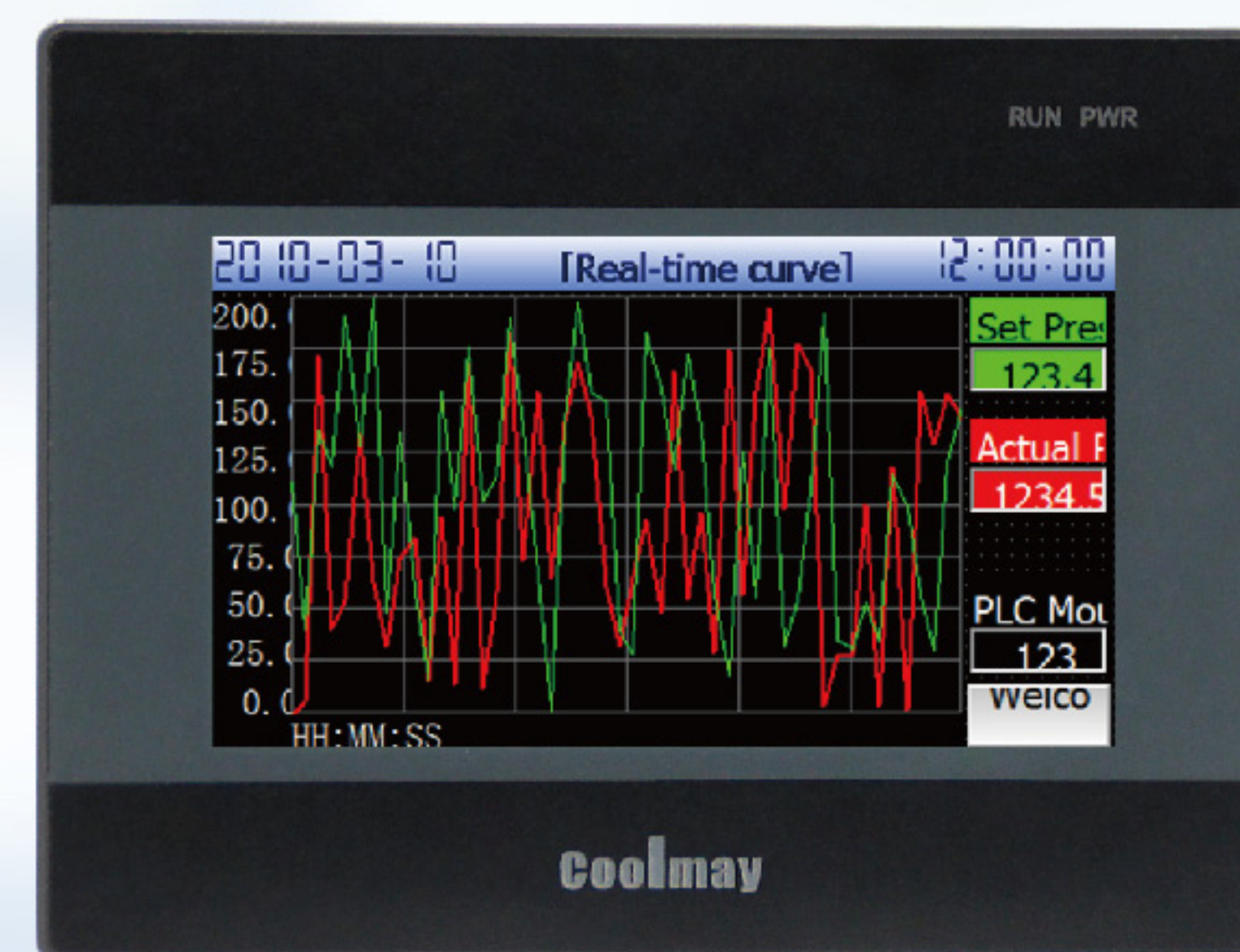
Easy to use

Support swipe up, down, left and right

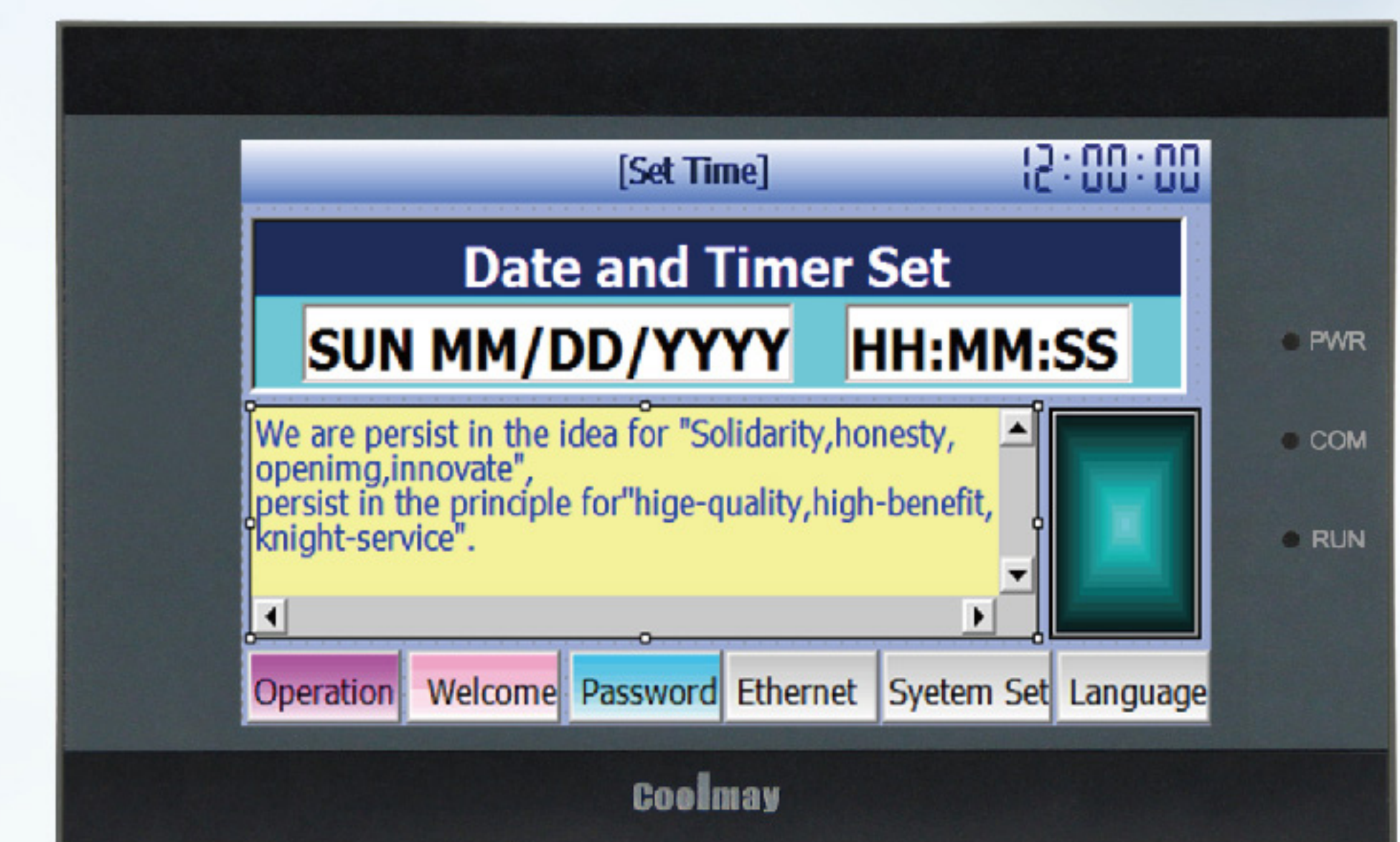
Product display



3.5"



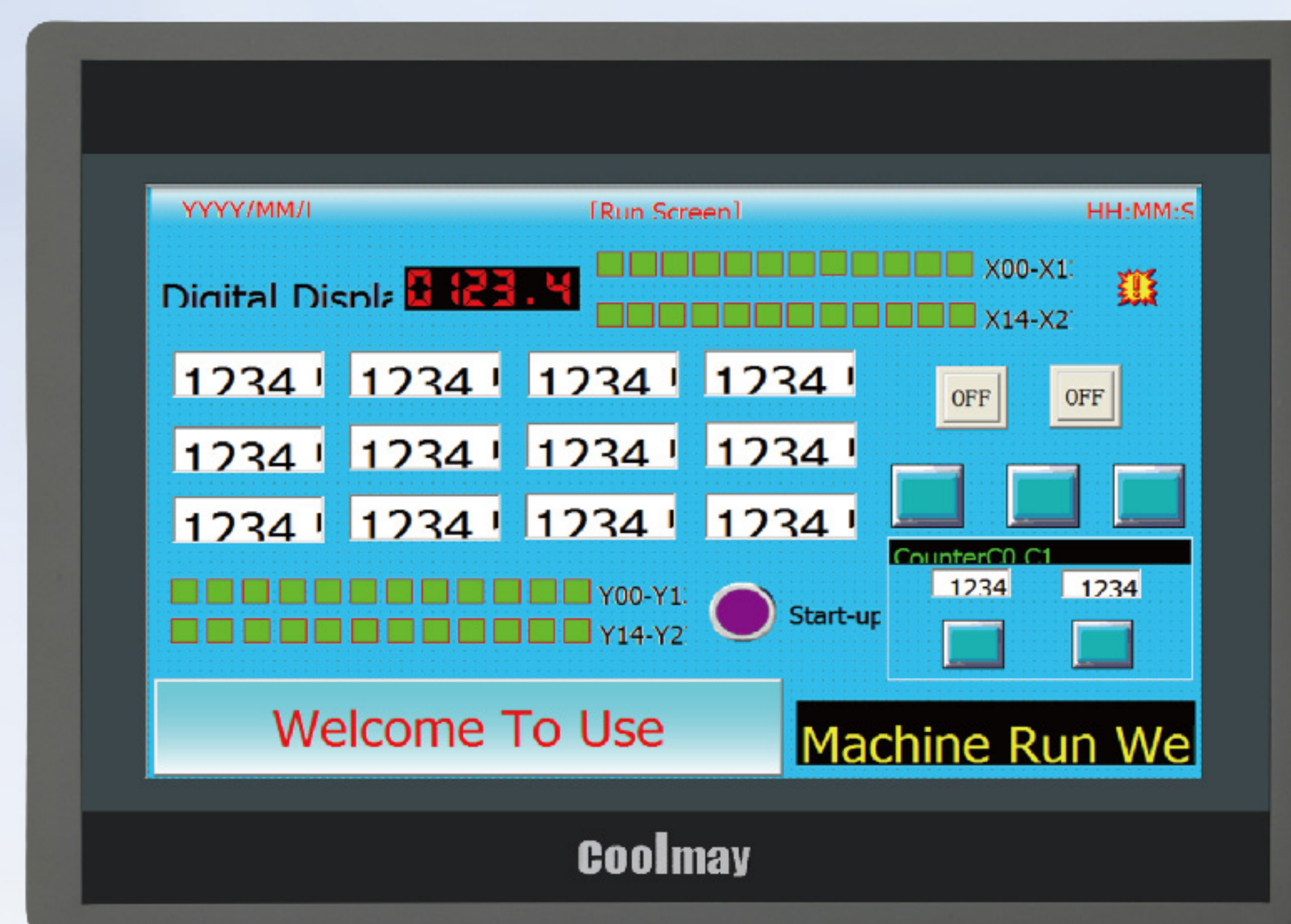
4.3"



5.0"



7"



10"

Specification

Model	TK6037FH	TK6043FH	TK6050FH
Display	3.5"TFT LCD screen	4.3"TFT LCD screen	5"TFT LCD screen
Resolution	320*240	480*272	800*480
Dimension	88*88*25mm	134*102*34mm	151*93*36mm
Cut-out size	72*72mm	120*94mm	143*86mm
Display size	73*56mm	97*56mm	108*65mm
Brightness	300cd/m ²	400cd/m ²	300cd/m ²
Contrast	400:1	400:1	400:1
Backlight	LED	LED	LED
Colour	65536	65536	65536
Touch panel	4-wire resistant	4-wire resistant	4-wire resistant
Accuracy	Length (X) ±1.5% Width (Y) ±1.5%	Length (X) ±1.5% Width (Y) ±1.5%	Length (X) ±1.5% Width (Y) ±1.5%
Flash	NOR Flash 8MB	NOR Flash 8MB	NOR Flash 16MB
RAM	64MB	64MB	64MB
CPU	408MHz	408MHz	408MHz
USB Device	Type-C, RS232, RS485	Type-C, RS232, RS485	Type-C, RS232, RS485
Serial port	1 RS232, 1 RS485	1x RS232, 1x RS485, or 1x RS232, 1x WIFI	1x RS232, 1x RS485, or 1x RS232, 1x WIFI
Calendar	Yes	Yes	Yes
Input power	12-24VDC ±10% <150mA @24VDC	12-24VDC ±10% <150mA @24VDC	12-24VDC ±10% <150mA @24VDC
Pressure test	500VAC, 1 minite	500VAC, 1 minite	500VAC, 1 minite
Insulation resistance	> 10MΩ@500VDC	> 10MΩ@500VDC	> 10MΩ@500VDC
Shockproof test	10-25Hz(XYZ 2G 30 minutes)	10-25Hz(XYZ 2G 30 minutes)	10-25Hz(XYZ 2G 30 minutes)
Shell material	ABS+PC	PET+PC	PET+PC
Weight	0.3kg	0.33kg	0.33kg
Installation	Panel installation	Panel installation	Panel installation
Protection level	IP65(front panel)	IP65(front panel)	IP65(front panel)
Working temperature	0~50°C	0~50°C	0~50°C
Working environment humidity	20%~90%RH	20%~90%RH	20%~90%RH
Storage temperature	-20~70°C	-20~70°C	-20~70°C
Software	mView1.38	mView1.38	mView1.38
CE certification	Yes	Yes	Yes

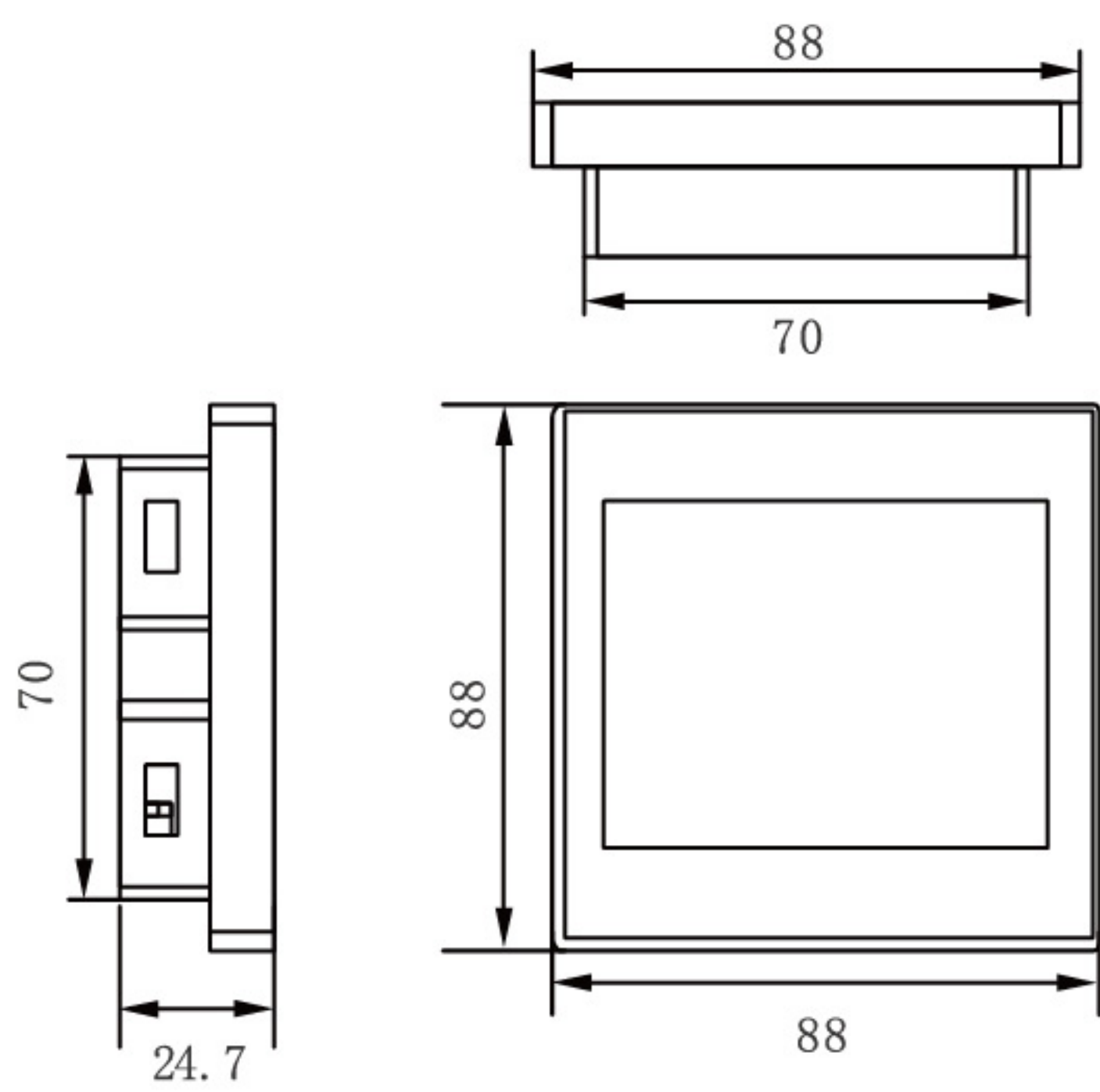
Specifications

Model	TK6070FH/HD	TK6100FH
Display	7" TFT LCD	10.1" TFT LCD
Resolution	800*480/1024*600	1024*600
Dimension	200*146*36mm	275*194*36mm
Cut-out size	192*138mm	262*180mm
Display size	154*87mm	222*125mm
Brightness	300cd/m ²	300cd/m ²
Contrast	400:1	400:1
Backlight	LED	LED
Colour	65536	65536
Touch panel	4-wire resistant	4-wire resistant
Accuracy	Length (X) $\pm 1.5\%$ Width (Y) $\pm 1.5\%$	Length (X) $\pm 1.5\%$ Width (Y) $\pm 1.5\%$
Flash	NOR Flash 16MB	NOR Flash 16MB
RAM	64MB	64MB
CPU	408MHz	408MHz
USB Device	Type-C, RS232, RS485	Type-C, RS232, RS485
WIFI	Optional(occupy RS485)	Optional(occupy RS485)
Serial port	RS232/RS485	RS232/RS485
Calendar	Yes	Yes
Input power	12-24VDC $\pm 10\%$ <150mA @24VDC	12-24VDC $\pm 10\%$ <150mA @24VDC
Pressure test	500VAC 1 minute	500VAC 1 minute
Insulation resistance	> 10M Ω @500VDC	> 10M Ω @500VDC
Shockproof test	10-25Hz(XYZ 2G 30 minutes)	10-25Hz(XYZ 2G 30 minutes)
Shell material	PET+PC	ABS+PC
Weight	0.54kg	0.7kg
Installation	Panel installation	Panel installation
Protection level	IP65(front panel)	IP65(front panel)
Working temperature	0~50°C	0~50°C
Working environment humidity	20%~90%RH	20%~90%RH
Storage temperature	-20~70°C	-20~70°C
Software	mView1.38	nView1.38
CE certification	Yes	Yes

Dimension

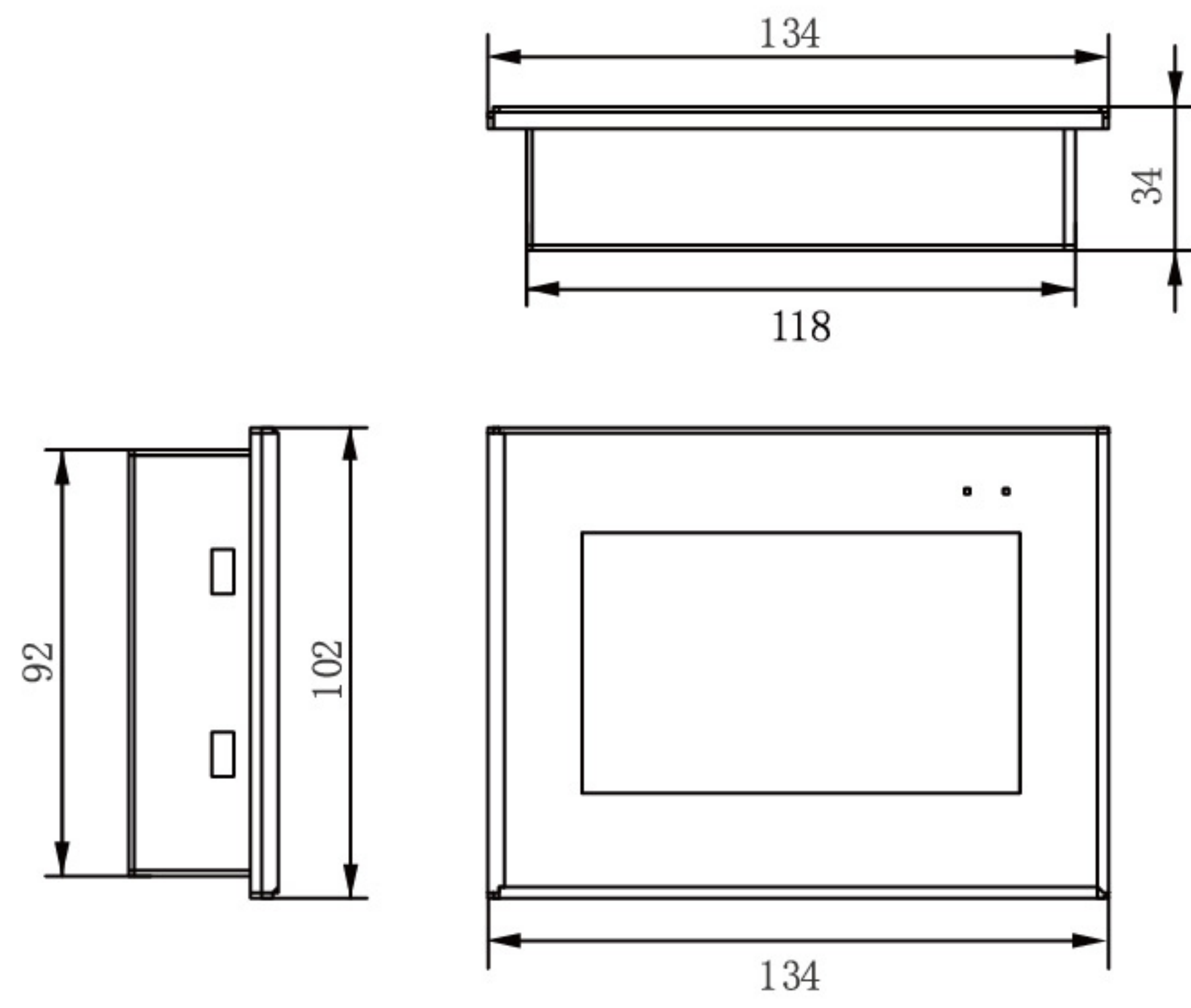
TK6037FH (wall mounting)

Cut-out size:72*72mm



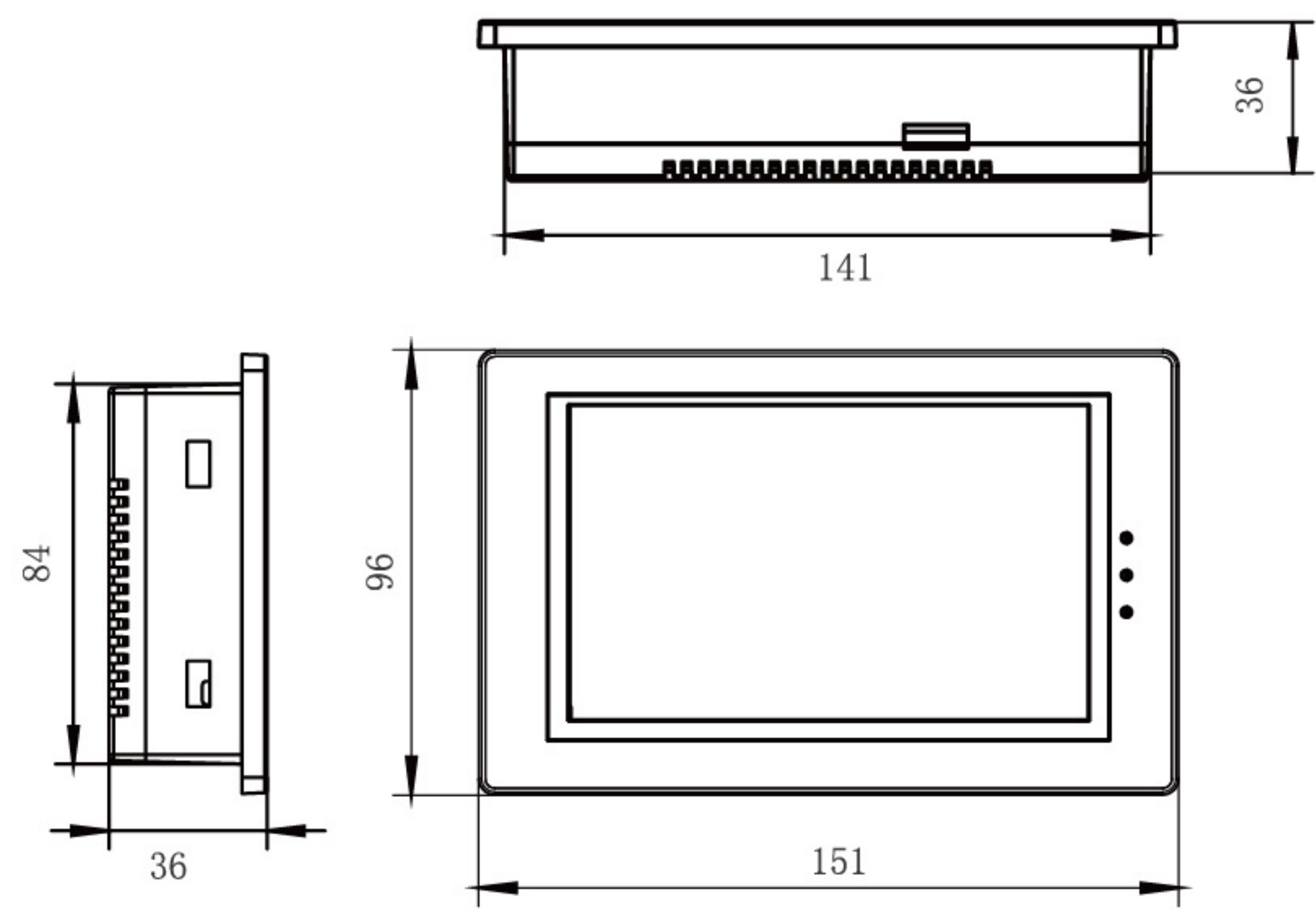
TK6043FH

Cut-out size:120*94mm



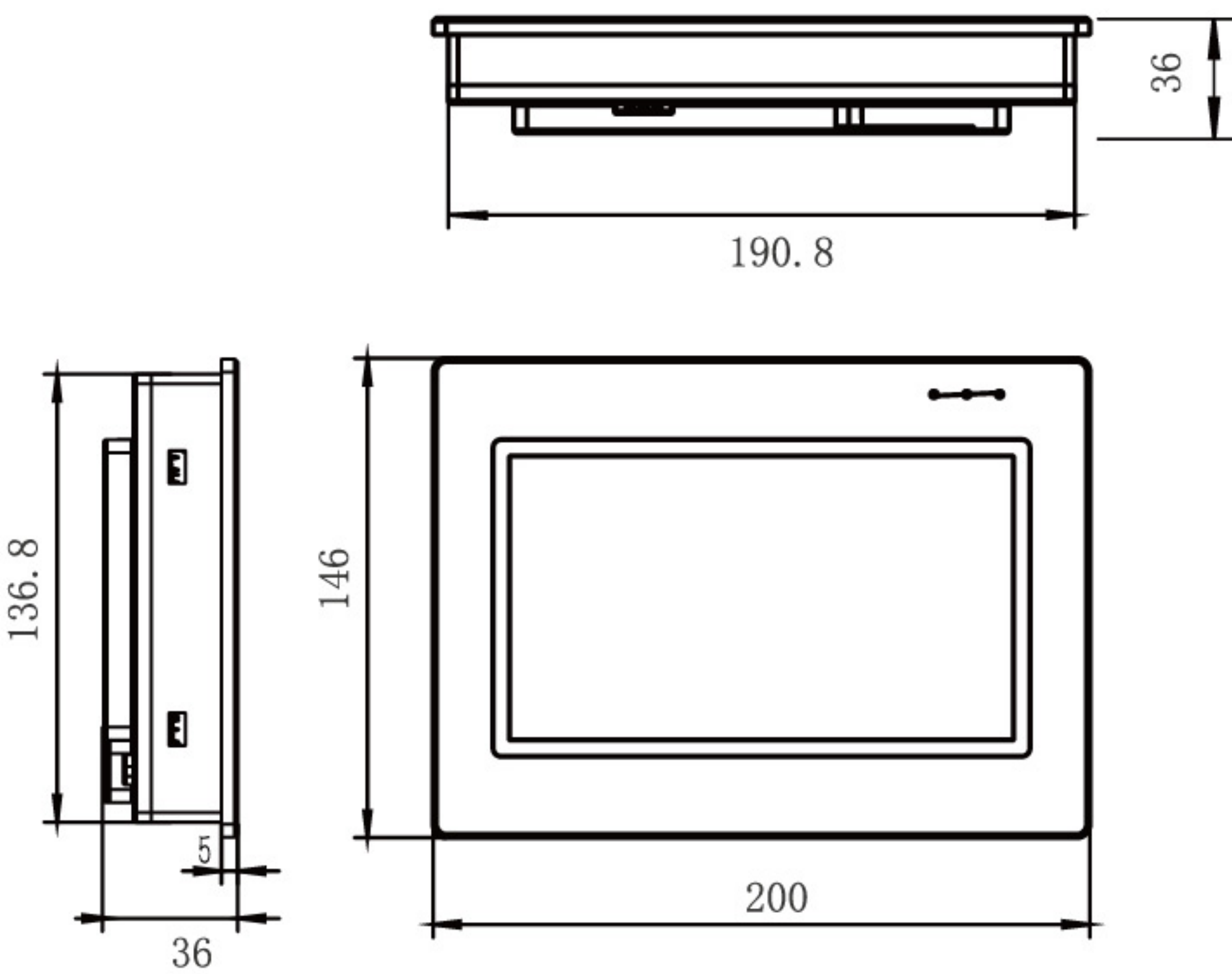
TK6050FH

Cut-out size: 143*86mm



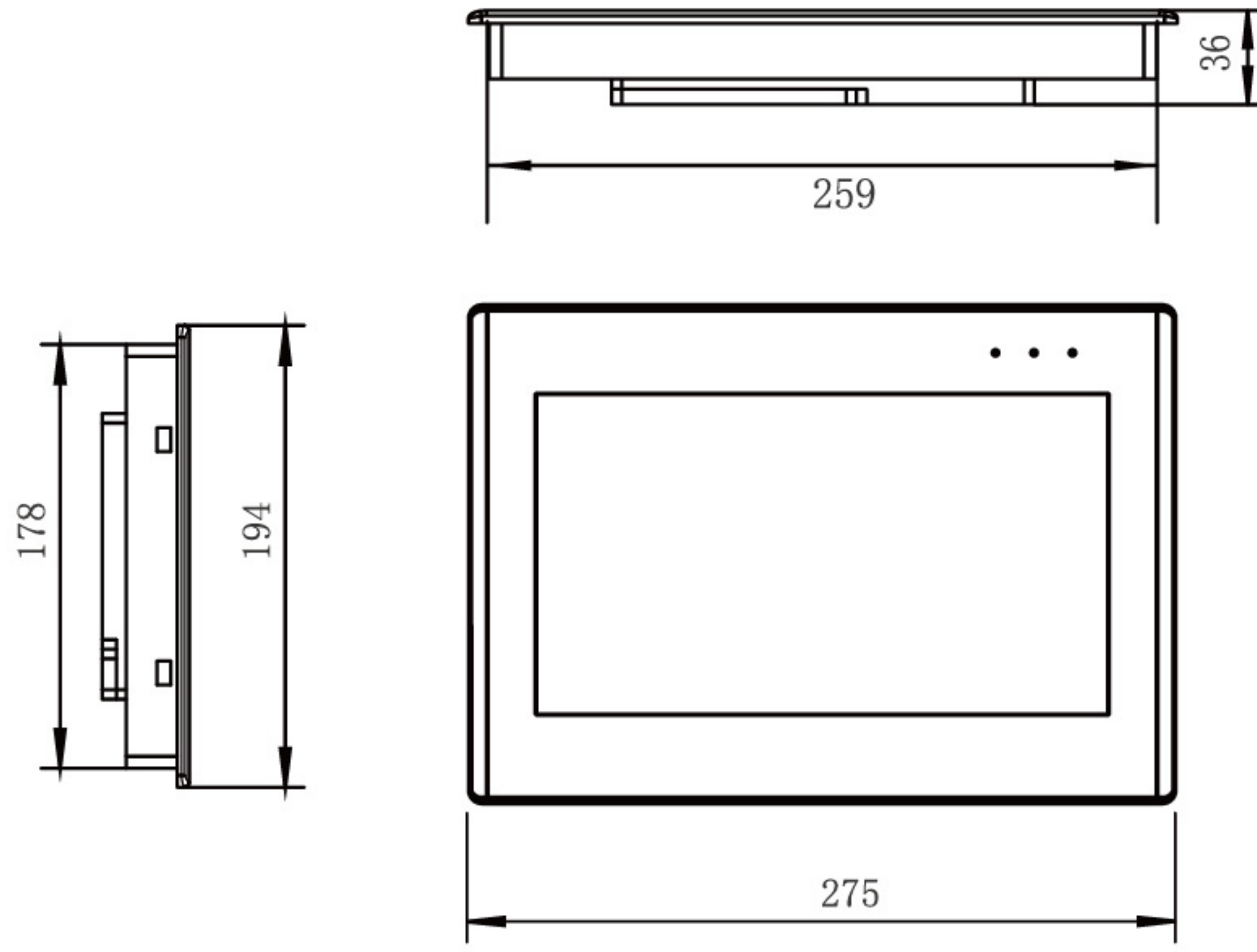
TK6070FH/HD

Cut-out size: 192*138mm



TK6100FH

Cut-out size: 262*180mm



Serve our customers wholeheartedly

Coolmay Technology has multiple branches and service outlets around the world.
Professional service team provides customers with high-quality services.
24 hours online to provide you with services.



AliExpress QR code



Alibaba QR code

Shenzhen Coolmay Technology Co., Ltd.

Address: #526, Block E, Building 5, Software Industry Base, Nanshan District, Shenzhen, China, 518061

Mobile: +86 13316892240

Email: m3@coolmay.com

Official website: www.coolmayplc.com

Copyright • Shenzhen Coolmay Technology Co., Ltd. When the product is updated, the information will change without notice.

